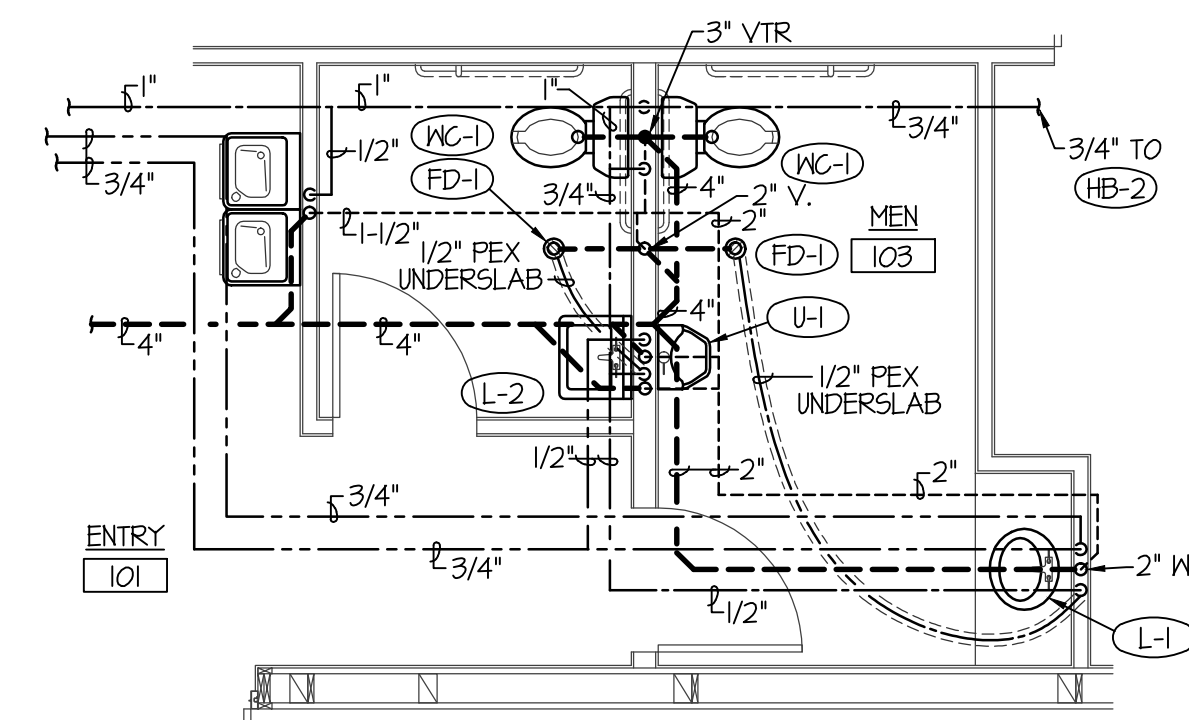
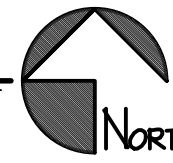
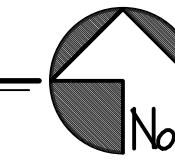


**LARGE SCALE TOILET ROOM PLUMBING PLAN**  
SCALE: 1/4" = 1'-0"

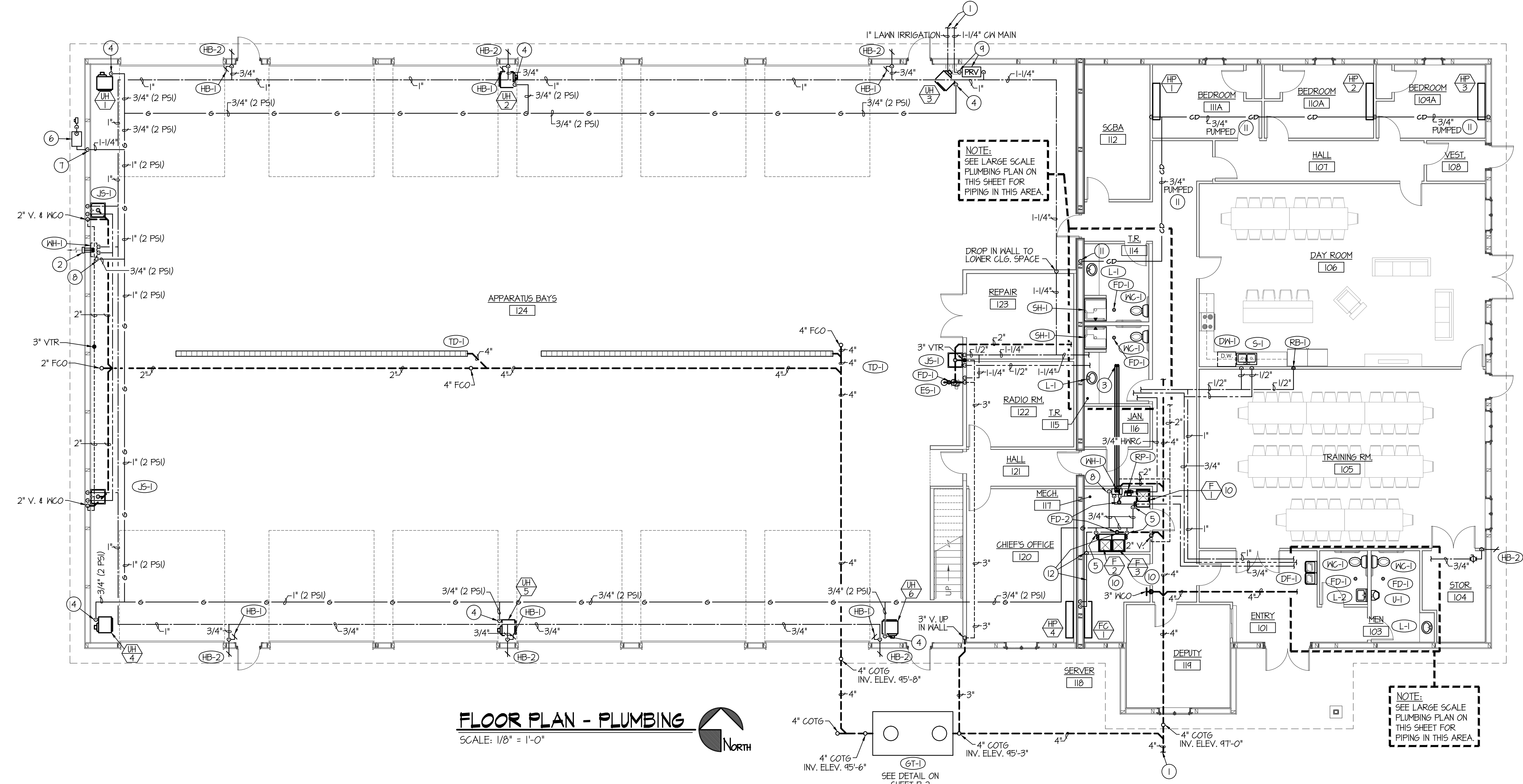


**LARGE SCALE TOILET ROOM PLUMBING PLAN**  
SCALE: 1/4" = 1'-0"



**PLAN NOTES:**

- 1 SEE CIVIL SITE PLAN FOR CONTINUATION OF PIPING.
- 2 RUN CONCENTRIC FLUE FROM WATER HEATER WH-1 THRU EXTERIOR WALL TO SIDEMALL VENT TERMINATION ASSEMBLY AS PER MANUFACTURER'S INSTRUCTIONS.
- 3 RUN CONCENTRIC FLUE FROM WATER HEATER WH-1 THRU ROOF TO VERTICAL VENT TERMINATION ASSEMBLY NEAR PEAK OF ROOF. RUN FLUES AS PER MANUFACTURER'S INSTRUCTIONS.
- 4 DROP 3/4" (2 PSI) GAS LINE DOWN TO UNIT HEATER AND CONNECT. INSTALL 2 PSI TO OZ. REGULATOR ON 3/4" GAS LINE SIZED FOR ACTUAL BTU LOAD OF UNIT SUPPLIED. VENT REGULATOR TO THE EXTERIOR AS REQUIRED. SEE DETAIL ON SHEET P-2.
- 5 DROP 3/4" (2 PSI) GAS LINE DOWN TO FURNACE AND CONNECT. INSTALL 2 PSI TO OZ. REGULATOR ON 3/4" GAS LINE SIZED FOR ACTUAL BTU LOAD OF UNIT SUPPLIED. VENT REGULATOR TO THE EXTERIOR AS REQUIRED. SEE DETAIL ON SHEET P-2.
- 6 GAS METER BY LOCAL GAS COMPANY SIZED FOR 1,000,000 BTU AT 2 PSI DELIVERY PRESSURE.
- 7 RISE 1-1/4" 2 PSI GAS LINE UP IN STUD SPACE OF WALL TO CEILING OF APPARATUS BAYS AND RUN ACROSS TO CEILING TO SERVE UNIT HEATER AND OTHER GAS FIRED EQUIPMENT AS SHOWN.
- 8 DROP 3/4" (2 PSI) GAS LINE DOWN TO WATER HEATER AND CONNECT. INSTALL 2 PSI TO OZ. REGULATOR ON 3/4" GAS LINE SIZED FOR ACTUAL BTU LOAD OF UNIT SUPPLIED. VENT REGULATOR TO THE EXTERIOR AS REQUIRED. SEE DETAIL ON SHEET P-2.
- 9 RUN 1-1/4" DOMESTIC CW MAIN UP THRU SLAB TO PRESSURE REDUCING VALVE ASSEMBLY. SEE SHEET P-2 FOR DETAIL.
- 10 RUN 3/4" CONDENSATE DRAIN LINE FROM FURNACE 4 DX COIL TO FLOOR DRAIN WITH DOWNTURNED 90° ELBOW AND AIRGAP.
- 11 RUN 3/4" PUMPED CONDENSATE DRAIN FROM HEAT PUMP 4 FAN COIL UNITS UP INTO WARM CEILING SPACE AND RUN ACROSS TO TOILET ROOM 114. DROP IN WALL BEHIND LAVATORY AND CONNECT TO SINK SIDE OF P-TRAP USING DISHWASHER CONNECTION.
- 12 RUN 3/4" PUMPED CONDENSATE DRAIN FROM HEAT PUMP 4 FAN COIL UNITS UP INTO WARM CEILING SPACE AND RUN ACROSS TO MECH ROOM 111. DROP IN WALL AND RUN ACROSS FLOOR EXPOSED TO FLOOR DRAIN AND TERMINATE WITH 90° DOWNTURNED ELBOW WITH AIRGAP.



**FLOOR PLAN - PLUMBING**  
SCALE: 1/8" = 1'-0"



PLUMBING LEGEND	
SYMBOL	DESCRIPTION
V	VENT
VTR	VENT THRU ROOF
CO	CLEANOUT
WCO	WALL CLEANOUT
COTG	CLEANOUT TO GRADE
—	PIPE DROP
—	PIPE RISE
—	BALL TYPE ISOLATION VALVE
—	SOIL OR WASTE PIPING
—	VENT LINE PIPING
—	DOMESTIC COLD WATER PIPING
—	DOMESTIC HOT WATER PIPING
—	HOT WATER RECIRC. PIPING
—	GAS PIPING
—	CONDENSATE DRAIN PIPING

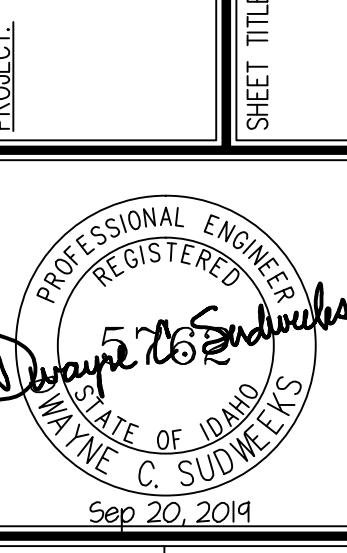


**Engineered Systems Associates  
Mechanical Engineers**

Drayne Sudweeks  
1355 East Center - Pocatello, Idaho 83201  
Phone: (208) 233-0501 Fax: (208) 233-0529 email: esa@engsystems.com

**A NEW BUILDING FOR:  
GOODING FIRE DEPARTMENT  
GOODING, IDAHO**

**MECH. / ELEC. FLOOR PLAN**



DRWN. BY:	CRD. BY:
SR	DCS
JOB NO.	DATE:
13055	AUG. 2014

SHEET: **0-1**  
OF: **THREE**

F:\V\13055 GOODING FIRE STATION\13055 P-1.dwg Sep 20, 2014 - 9:45am